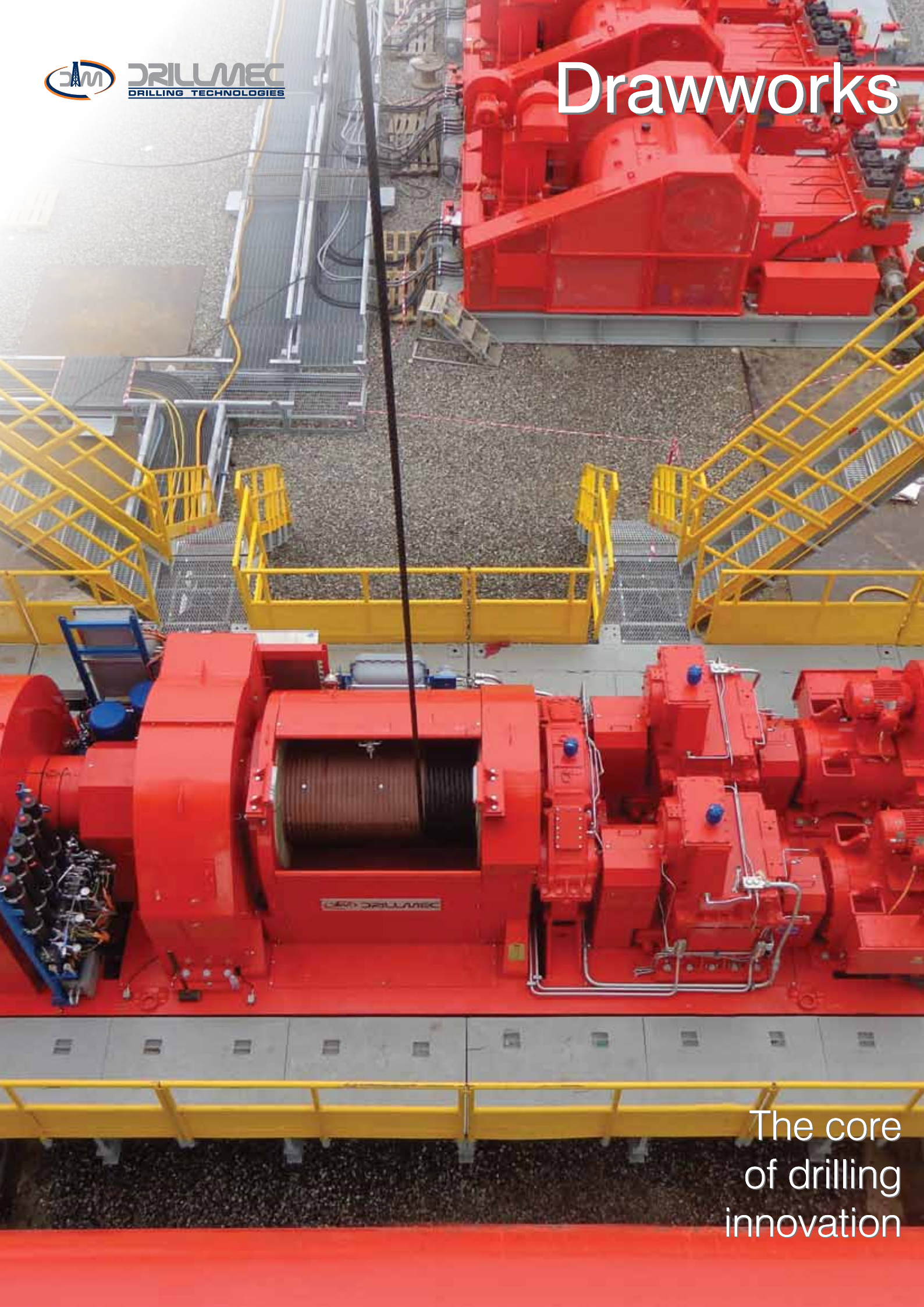


# Drawworks



The core  
of drilling  
innovation



## Drawworks

Drillmec produces a wide range of drawworks engineered for today's tough challenges. Like with other Drillmec drilling equipment, our Gear Driven Drawworks can be fitted to all rigs with power ranging from 1000 to 6000 hp with a nominal depth range from 3500 to 10000 meters (11000 ft to 32000 ft).

Drillmec's GDS Series is the new generation of Compact Gear Driven Single Speed Drawworks built to improve safety and performance. The compact design makes this product line the state of art to the oil industry for onshore application and excellent for offshore application in case of new installation, refurbishment and upgrading of existing ones.

Drillmec's GD Series Drawworks for Offshore Application are developed to offer superior performance for a variety of drilling operations and work environments for deep water drilling applications. The GD Series for Offshore Application series are compact-sized, create a small footprint, are durable, effective and energy-efficient in deep water application.

COMPLETE RANGE

**1000**  
**6000**  
horsepower

NEW GENERATION

**GDS**  
Series

*Designed to reduce noise,  
vibration and maintenance  
at highest performance level*



### GDS Series - Compact Gear Driven Drawworks

Model	Power Rating		Max Hoisting		Transmission	Wire Rope		Motor Assembly	
	hp	kW	lbs	mtons		in	mm	hp	kW
<b>GDS 1000</b>	1000	745	500000	227	Gear driven	1 1/4	31.8	1x 1500	1x 1120
<b>GDS 2000</b>	2000	1491	1300000	589	Gear driven	1 1/2	38.1	2x 1609	2x 1200
<b>GDS 3000</b>	3000	2237	1700000	771	Gear driven	1 3/4	44.45	3x 1609	3x 1200

### GDM Series - Modular Multi-Speed Gear-Box Drawworks

Model	Power Rating		Max Hoisting		Transmission	Wire Rope		Motor Assembly	
	hp	kW	lbs	mtons		in	mm	hp	kW
<b>GDM 1500</b>	1500	1118	750000	340	1x 2-speed Gear-box	1 3/8	35	2x 1150	2x 857
<b>GDM 2000</b>	2000	1491	1300000	589	2x 2-speed Gear-box	1 1/2	38.1	2x 1150	2x 857
<b>GDM 3000</b>	3000	2237	1700000	771	2x 2-speed Gear-box	1 3/4	44.45	2x 1609	2x 1200

### GD Series - Compact-Sized Drawworks for Offshore Application

Model	Power Rating		Max Hoisting		Transmission	Wire Rope		Motor Assembly	
	hp	kW	lbs	mtons		in	mm	hp	kW
<b>GDM 4500</b>	4500	2011	2000000	907	3x 2-speed Gear-box	2	50.8	3x 1500	3x 1120
<b>GDM 6000</b>	6000	3260	2300000	1041	4x 2-speed Gear-box	2	50.8	4x 1500	4x 1120



# Quality System



## Policy

Drillmec has always viewed continuous improvement of company processes and complete satisfaction of customer's needs as essential factors for standing out on the highly complex, competitive oil and gas market. Drillmec's Quality System and HSE System are essential tools for achieving its business goals.

In accordance with its general aims and strategies for growth, Management promotes:

- The central role of the customer
- Full involvement of all personnel to ensure complete awareness of the significance and importance of their work and how they can contribute to achieving quality goals, environment, health and safety protection
- Continuous improvement of the quality of products and services, especially through a strong drive toward technological innovation
- Continuous improvement of process performance
- Safeguarding of the environment and protection of workers' health and safety. Such commitment is widespread not only to our workers, but even to our subcontractors and suppliers.

*Drillmec Drawworks are the result of years of experience with the main objective of continuous improvement over decades of innovation.*

## Certifications

Drillmec SpA quality management systems is certified by API (American Petroleum Institute), DNV-GL (DNV Business Assurance) and can work under NORSOK, ABS, DNV-GL Maritime and RMRS regulations, if required by the client. Drillmec products are also compliant with Technical Regulations of the Custom Union, (Russia, Bielorusia, Kazakhstan) EAC certified.

*Drillmec INC is certified by API 4F-0058.  
Drillmec India is certified API 4F-0341, API 8C-0273,  
API Q1-1977 and ISO 2087.  
OJSC Seismotekhnika (Drillmec Belarus) is certified  
API 4F-0361, API Q1-2203 and ISO-2301.*

API Product Licenses Numbers	API/ISO/OHSAS Certification
API 4F-0062	API Q1-0527
API 6A-0492	ISO 9001:2015
API 7-1-0305	ISO 14001:2004
API 7K-0045	OHSAS 18001:2007
API 8C-0041	



APIQR® Registration no. 0076



COMPANY WITH  
MANAGEMENT SYSTEM  
CERTIFIED BY DNV GL  
= ISO 9001 =  
= ISO 14001 =  
= OHSAS 18001 =



For further information...

If you would like further information about our company, products or services, please don't hesitate to get in touch with us. You can do this in a number of ways...

- Website	<b>www.drillmec.com</b>
- Email	<b>info@drillmec.com</b> <b>info@drillmecinc.com</b>
- Addresses	<b>12, via I° Maggio</b> <b>29027 Gariga di Podenzano (PC) - Italy</b> <b>18320 Imperial Valley Drive</b> <b>77060 Houston, Texas - U.S.A.</b>
- For general information please call	<b>Italy +39 0523 354200</b> <b>U.S.A. +1 281 885 0777</b>
- For sales, please call our sales department	<b>Italy +39 0523 354220</b> <b>Italy +39 0523 354241</b> <b>U.S.A. +1 281 214 7669</b>
- For spare parts, please call our spare parts department	<b>Italy +39 0523 354285</b> <b>U.S.A. +1 281 214 7866</b>

## BRANCHES



- DRILLMEC SPA - ITALY
- DRILLMEC INC. - U.S.A.
- DRILLMEC MEXICO - MEXICO
- DRILLMEC COLOMBIA - COLOMBIA
- DRILLMEC BRAZIL - BRAZIL
- DRILLMEC ARGENTINA - ARGENTINA
- 000 DRILLMEC R - RUSSIA
- SEISMOTEKHNKA - BELARUS
- I.D.T. - U.A.E.
- DRILLMEC IRAQ - IRAQ
- DRILLMEC INDIA - INDIA
- DRILLMEC SINGAPORE - SINGAPORE